

Serge Poliakoff

Gouaches 1938–1969

May 20 — September 25, 2021

Cheim & Read

23 East 67 Street New York

CHEIM & READ



Serge Poliakoff. *Composition Abstraite*, 1942, Gouache on paper. 18 3/4 x 24 1/4 inches / 47.6 x 61.6 cm. © 2021 Serge Poliakoff / Artists Rights Society (ARS), New York / ADAGP, Paris.

Serge Poliakoff *Gouaches 1938–1969*

May 20 — September 25, 2021

Cheim & Read
23 East 67 Street
New York NY 10065

Cheim & Read is pleased to present *Serge Poliakoff: Gouaches 1938–1969*, an exhibition devoted to the works on paper of the Russian-born painter who lived and worked in Paris. This show follows the survey of Poliakoff's work held at the gallery in 2016, which was the artist's first solo exhibition in New York in thirty-five years. *Gouaches 1938–1969* opens on May 20 and runs through September 25, 2021.

Serge Poliakoff (1900–1969) has long been considered a painter's painter: Sean Scully has written an essay to accompany the current exhibition; Amy Sillman selected his *Composition*, 1956, for *The Shape of Shape*, her acclaimed 2019 Artist's Choice show at the Museum of Modern Art; Joe Fyfe curated the 2016 exhibition and wrote its catalogue essay. Fyfe also worked with Cheim & Read to organize the 2020 exhibition of the late American painter Kimber Smith, who also lived and worked in Paris.

“Poliakoff,” Fyfe noted, “was one of the ‘Nouvelle Ecole de Paris,’” or the New School of Paris, “a group of artists who came a generation after Picasso, Léger, Matisse, Miró, and Braque.”

Like the Abstract Expressionists in the United States, he turned to pure abstraction exclusively in the postwar period, although works such as *Bandes colorées* (1937) are evidence that he was already interested in it by the mid-1930s. In May 1936, in a letter to Josef Albers at Black Mountain College, he wrote, “Abstract art is finally taking off in quite a few countries.”

Poliakoff, however, never adopted the oversize scale of his American counterparts, and continued to paint in a cramped studio even after he achieved recognition and financial success. The gouaches displayed in this exhibition, which are as small as 8 ½ by 12 inches and no larger than 25 ½ by 19 inches, underscore that sense of privacy. Their dazzling chromatic array departs from the loaded brushwork of the artist's oil paintings with a freshness, intimacy, and personal touch that revels in the immediacy of pure, vibrant pigment.

Writing about the gouaches in 1950, the French critic Pierre Gueguen stated: “Here is a serious mind, entirely dedicated to the dream of forms for form's sake, which is the great mystery to

be solved for Abstraction. He goes from the geometric purity of archetypes to the quivering of perceptions, held as they are like a tide entering a dike, canal or quay of a port.”

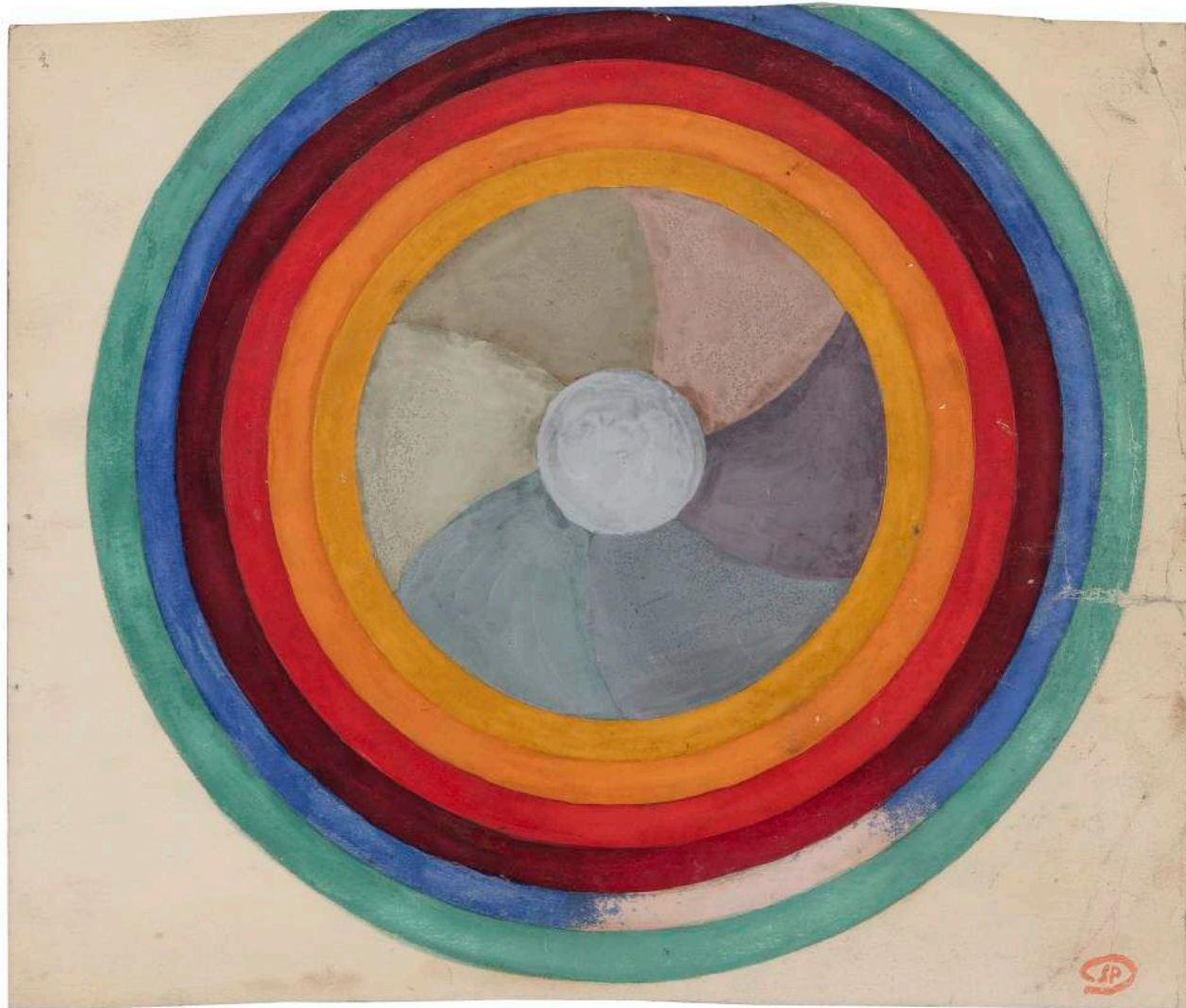
SERGE POLIAKOFF

Serge Poliakoff was born on January 8, 1900, in Moscow. By 1914, he was taking drawing classes, but the Revolution of 1917 disrupted his family life, and in 1920 he slipped out of the country to Constantinople (now Istanbul, Turkey), where he spent a year. A talented musician, Poliakoff made his way across Europe, accompanying his aunt, a singer, on the guitar, before arriving in Paris in 1924. There he played folk songs in Russian nightclubs at night while taking private lessons in drawing and painting during the day.

In 1929, he enrolled at the Académie de la Grande Chaumière in Montparnasse, and later at the Académie Frochot in Montmartre while continuing to earn his living by playing guitar. He met his future wife, Marcelle Perreur Lloyd, a half-Irish Frenchwoman, in 1935, and settled with her in London, where he enrolled in the Grosvenor School of Art and, a year later, the Slade School of Art.

Returning to Paris in 1937, where he had his first solo show, he found himself drawn increasingly to abstraction after meeting Wassily Kandinsky, Sonia and Robert Delaunay, and Otto Freundlich. He started making abstract paintings in 1942, and showed them for the first time in 1945. His work has since been the subject of more than two hundred international solo exhibitions, and it has been included in hundreds of group shows. He died in Paris on October 12, 1969.

Poliakoff's paintings, gouaches, and prints are held in more than one hundred public collections, including the Kunstmuseum Bern; Neue Nationalgalerie, Berlin; Museum of Modern Art, New York; Solomon R. Guggenheim Museum, New York; Stedelijk Museum, Amsterdam; Tate Gallery, London; and Musée National d'Art Moderne, Centre Georges Pompidou, Paris, which held a major retrospective, *Le Rêve des Formes* [The Dream of Forms] in 2013.



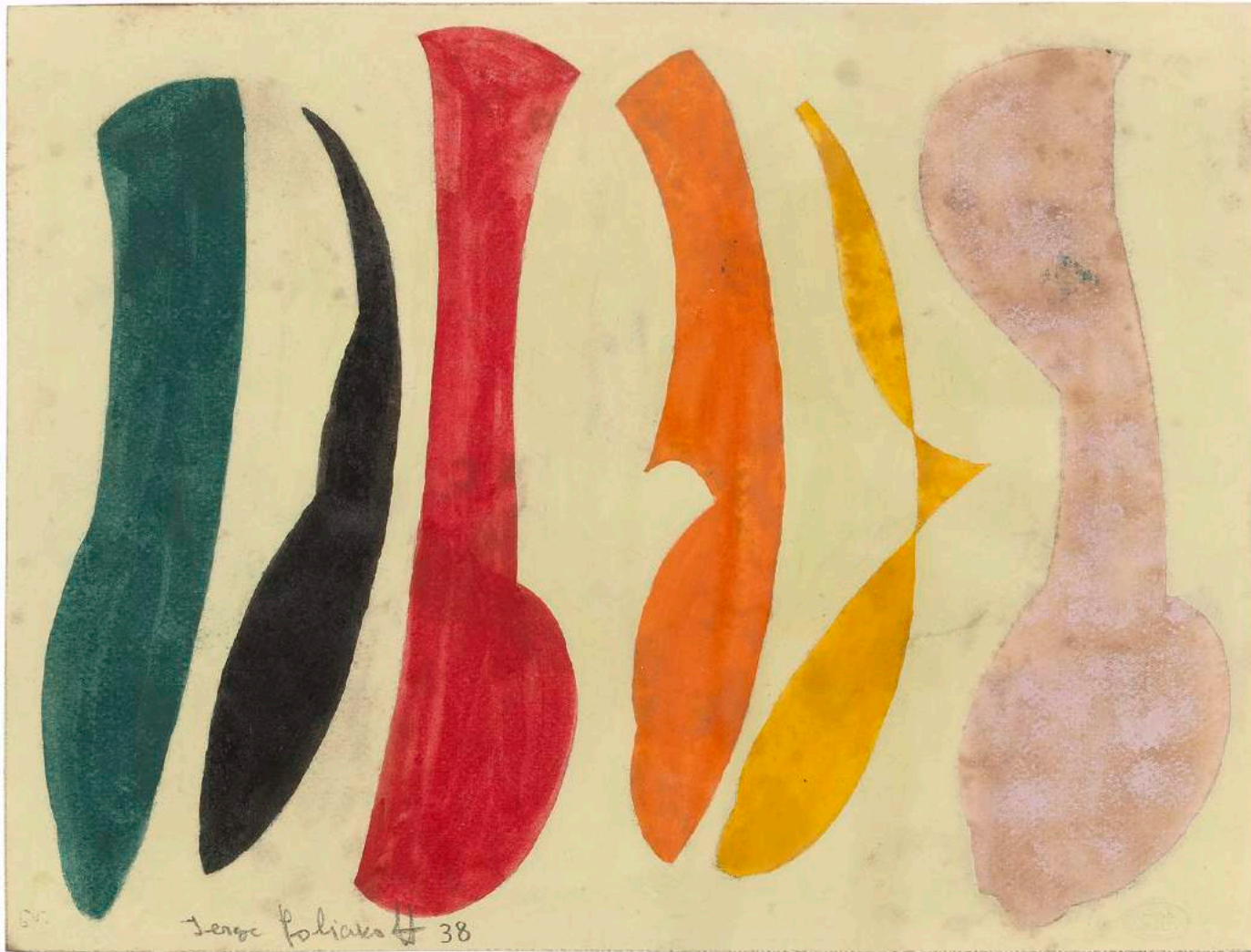
Serge Poliakoff
ÉTUDE DE CERCLES 1938
Gouache on paper
10 1/2 x 12 1/2 inches
26.7 x 31.8 centimeters
(838070)
CR# SP.40241

CHEIM & READ

23 EAST 67TH STREET NEW YORK NY 10065

TEL +1 212 242 7727

GALLERY@CHEIMREAD.COM



Serge Poliakoff
COMPOSITION ABSTRAITE 1938
Gouache on paper
9 x 12 inches
22.9 x 30.5 centimeters
CR# SP.19276

CHEIM & READ

23 EAST 67TH STREET NEW YORK NY 10065

TEL +1 212 242 7727

GALLERY@CHEIMREAD.COM



Serge Poliakoff
COMPOSITION ABSTRAITE 1939
Gouache on paper
9 3/4 x 12 1/4 inches
24.8 x 31.1 centimeters
(839004)
CR# SP.40243

CHEIM & READ

23 EAST 67TH STREET NEW YORK NY 10065

TEL +1 212 242 7727

GALLERY@CHEIMREAD.COM



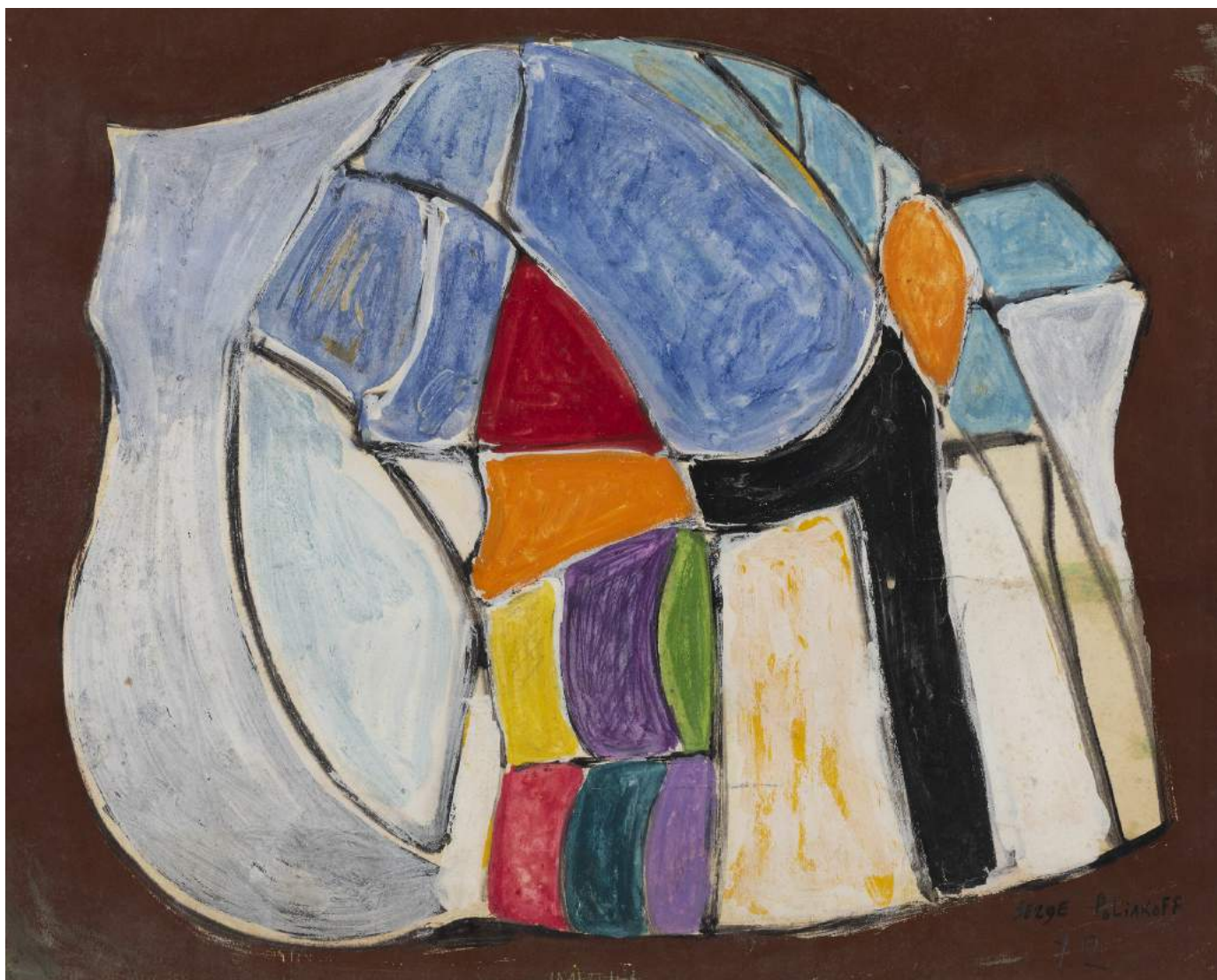
Serge Poliakoff
COMPOSITION ABSTRAITE 1940
Gouache on paper
8 3/4 x 11 1/2 inches
22.2 x 29.2 centimeters
(840030)
CR# SP.40244

CHEIM & READ

23 EAST 67TH STREET NEW YORK NY 10065

TEL +1 212 242 7727

GALLERY@CHEIMREAD.COM



Serge Poliakoff
COMPOSITION ABSTRAITE 1942
Gouache on paper
18 3/4 x 24 1/4 inches
47.6 x 61.6 centimeters
(842010)
CR# SP.40245

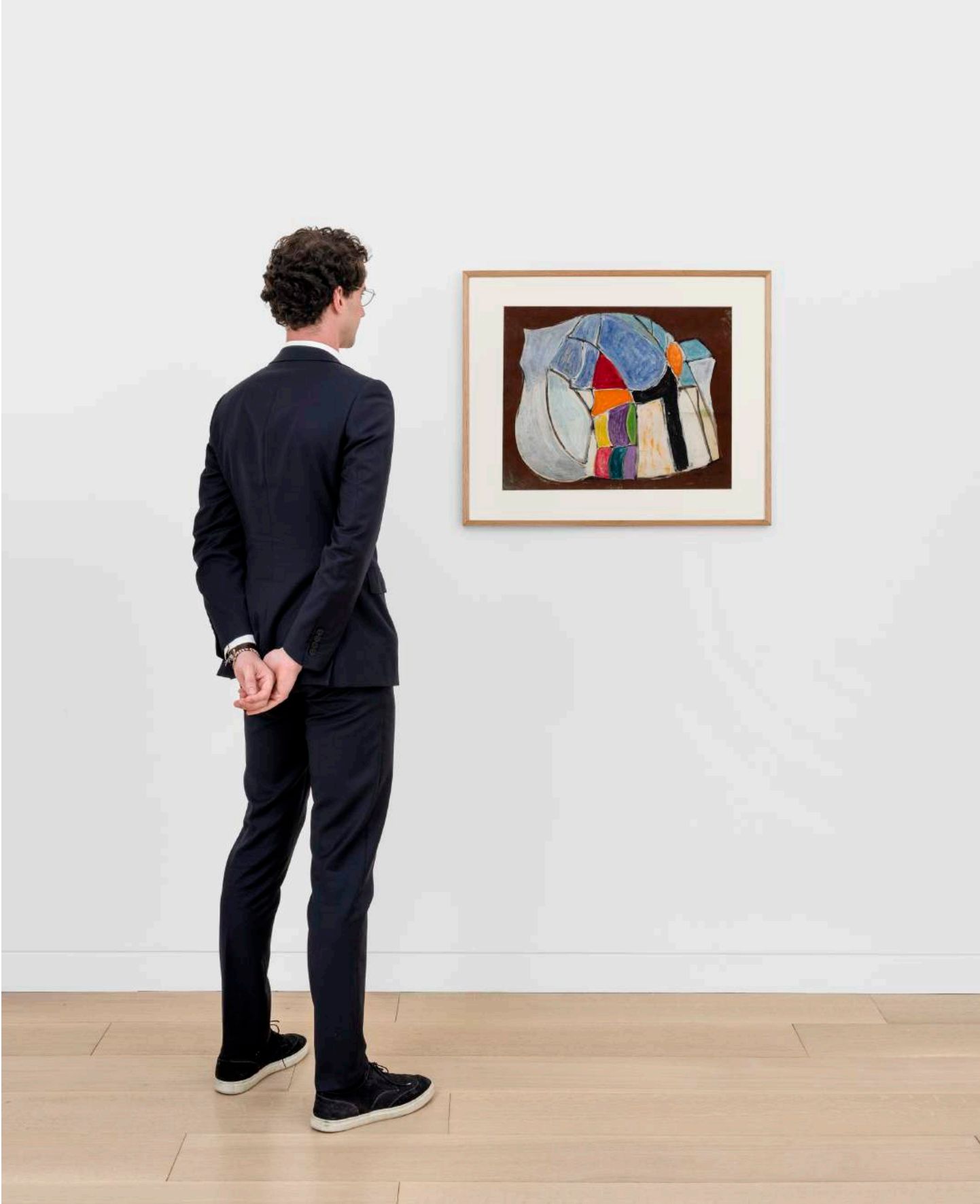
CHEIM & READ

23 EAST 67TH STREET NEW YORK NY 10065

TEL +1 212 242 7727

GALLERY@CHEIMREAD.COM







Serge Poliakoff
COMPOSITION ABSTRAITE 1948
Gouache on paper
24 1/2 x 18 1/4 inches
62.2 x 46.4 centimeters
(848005)
CR# SP.40246

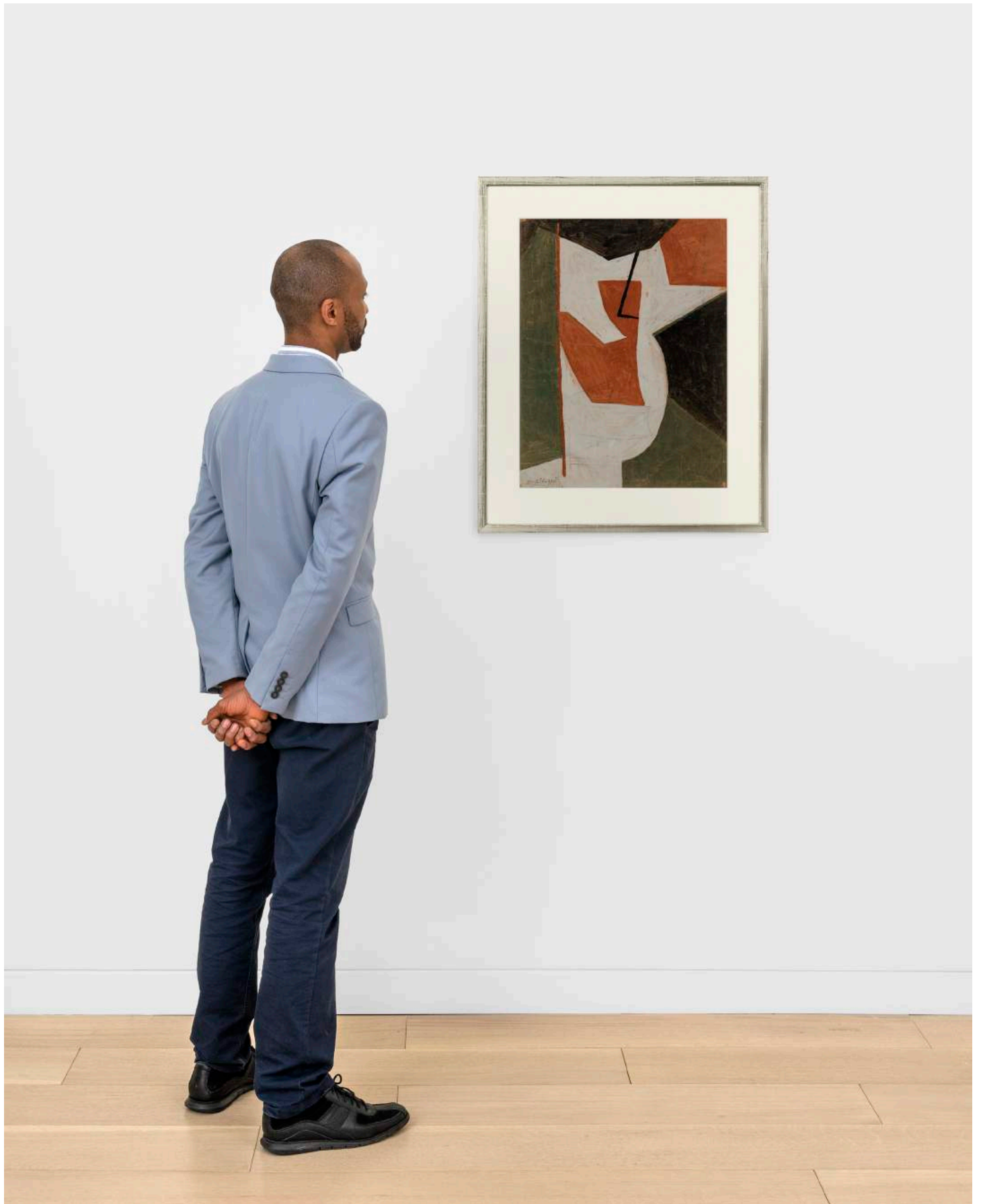
CHEIM & READ

23 EAST 67TH STREET NEW YORK NY 10065

TEL +1 212 242 7727

GALLERY@CHEIMREAD.COM







Serge Poliakoff
ROUGE, JAUNE ET NOIR 1951
Gouache on paper
23 1/4 x 17 3/8 inches
59 x 44 centimeters
(ARCHIVES: 853032)
CR# SP.19282

CHEIM & READ

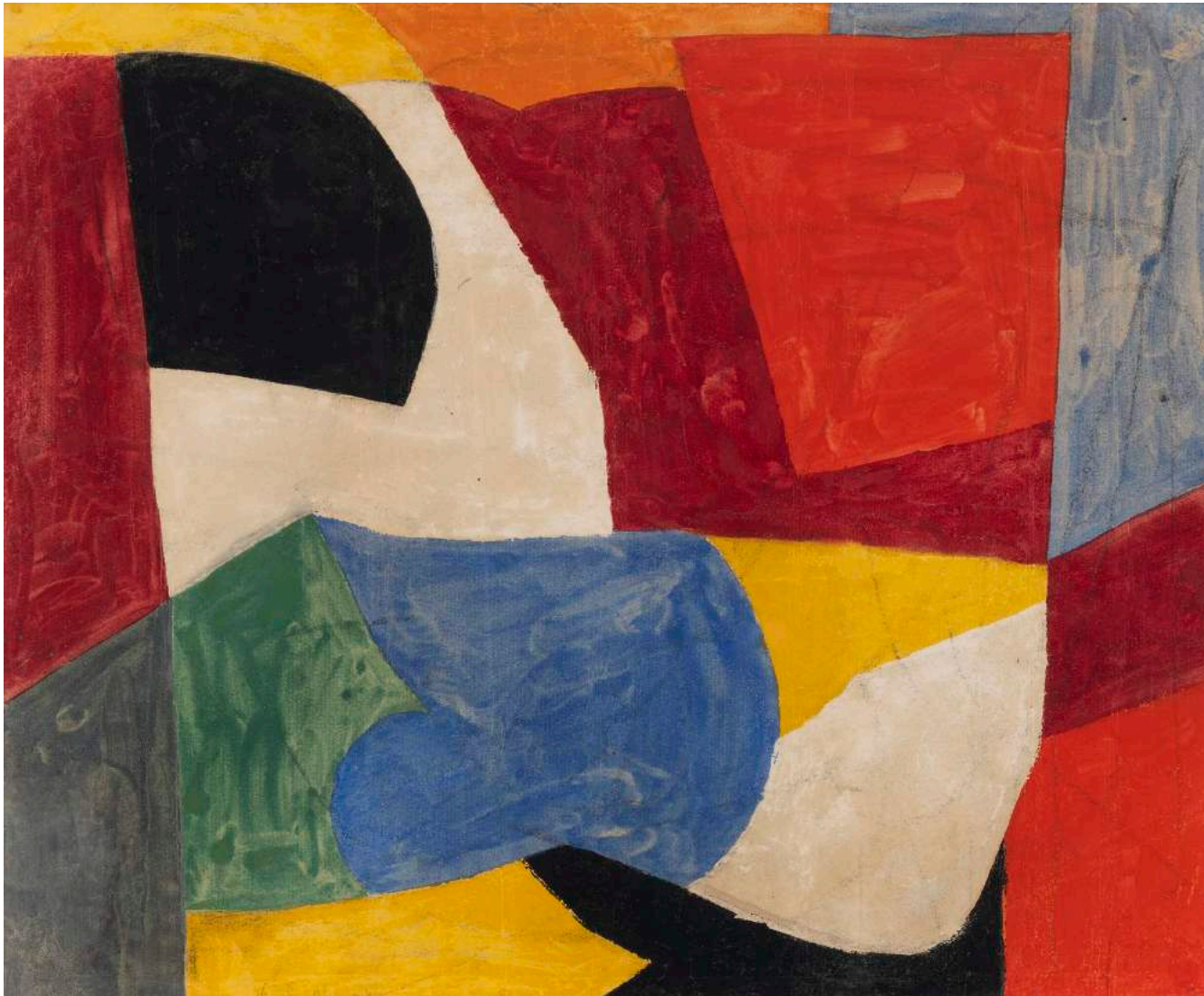
23 EAST 67TH STREET NEW YORK NY 10065

TEL +1 212 242 7727

GALLERY@CHEIMREAD.COM







Serge Poliakoff
COMPOSITION ABSTRAITE 1950
Gouache on paper
12 1/2 x 15 1/4 inches
32 x 38.5 centimeters
(850055)
CR# SP.36005

CHEIM & READ

23 EAST 67TH STREET NEW YORK NY 10065

TEL +1 212 242 7727

GALLERY@CHEIMREAD.COM



Serge Poliakoff
COMPOSITION JAUNE circa 1955
Gouache on paper
24 3/8 x 18 1/2 inches
62 x 47 centimeters
(ARCHIVES: 855016)
CR# SP.19283

CHEIM & READ
23 EAST 67TH STREET NEW YORK NY 10065
TEL +1 212 242 7727
GALLERY@CHEIMREAD.COM



Serge Poliakoff
COMPOSITION ABSTRAITE 1957
Gouache on paper
18 3/4 x 24 1/4 inches
47.6 x 61.6 centimeters
(857074)
CR# SP.40240

CHEIM & READ

23 EAST 67TH STREET NEW YORK NY 10065

TEL +1 212 242 7727

GALLERY@CHEIMREAD.COM







Serge Poliakoff
COMPOSITION ABSTRAITE 1959
Gouache on paper
24 x 18 inches
61 x 45.7 centimeters
(857006)
CR# SP.40238

CHEIM & READ
23 EAST 67TH STREET NEW YORK NY 10065
TEL +1 212 242 7727
GALLERY@CHEIMREAD.COM



Serge Poliakoff
COMPOSITION ABSTRAITE 1959
Gouache on paper
18 x 24 inches
45.7 x 61 centimeters
(858011)
CR# SP.40239

CHEIM & READ

23 EAST 67TH STREET NEW YORK NY 10065

TEL +1 212 242 7727

GALLERY@CHEIMREAD.COM







Serge Poliakoff
COMPOSITION ABSTRAITE 1960
Gouache on paper
18 x 24 1/4 inches
45.7 x 61.6 centimeters
(860049)
CR# SP.40237

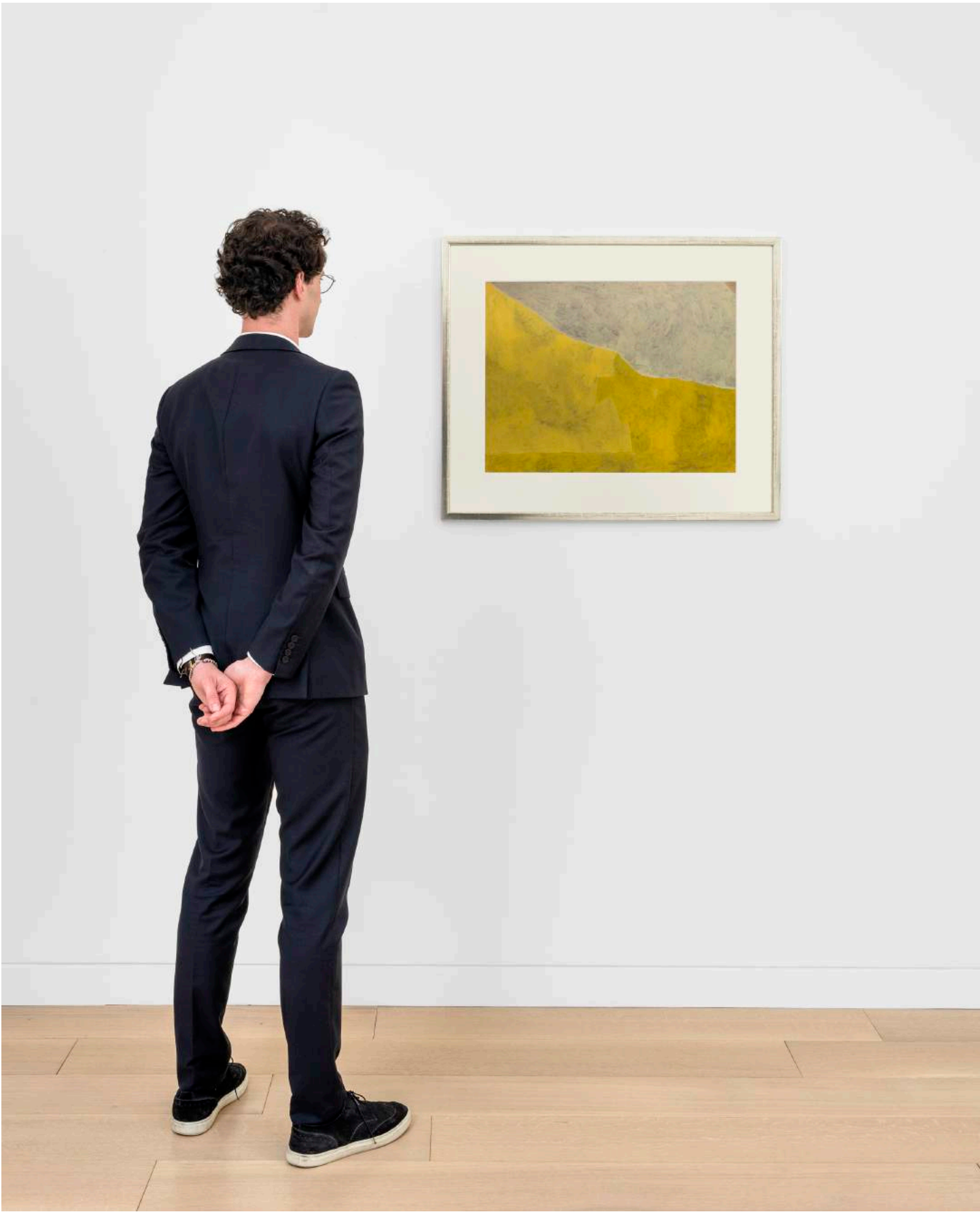
CHEIM & READ

23 EAST 67TH STREET NEW YORK NY 10065

TEL +1 212 242 7727

GALLERY@CHEIMREAD.COM







Serge Poliakoff
COMPOSITION ABSTRAITE 1961
Gouache on paper
24 3/8 x 18 1/2 inches
62 x 47 centimeters
(ARCHIVES: 861064)
CR# SP.35890

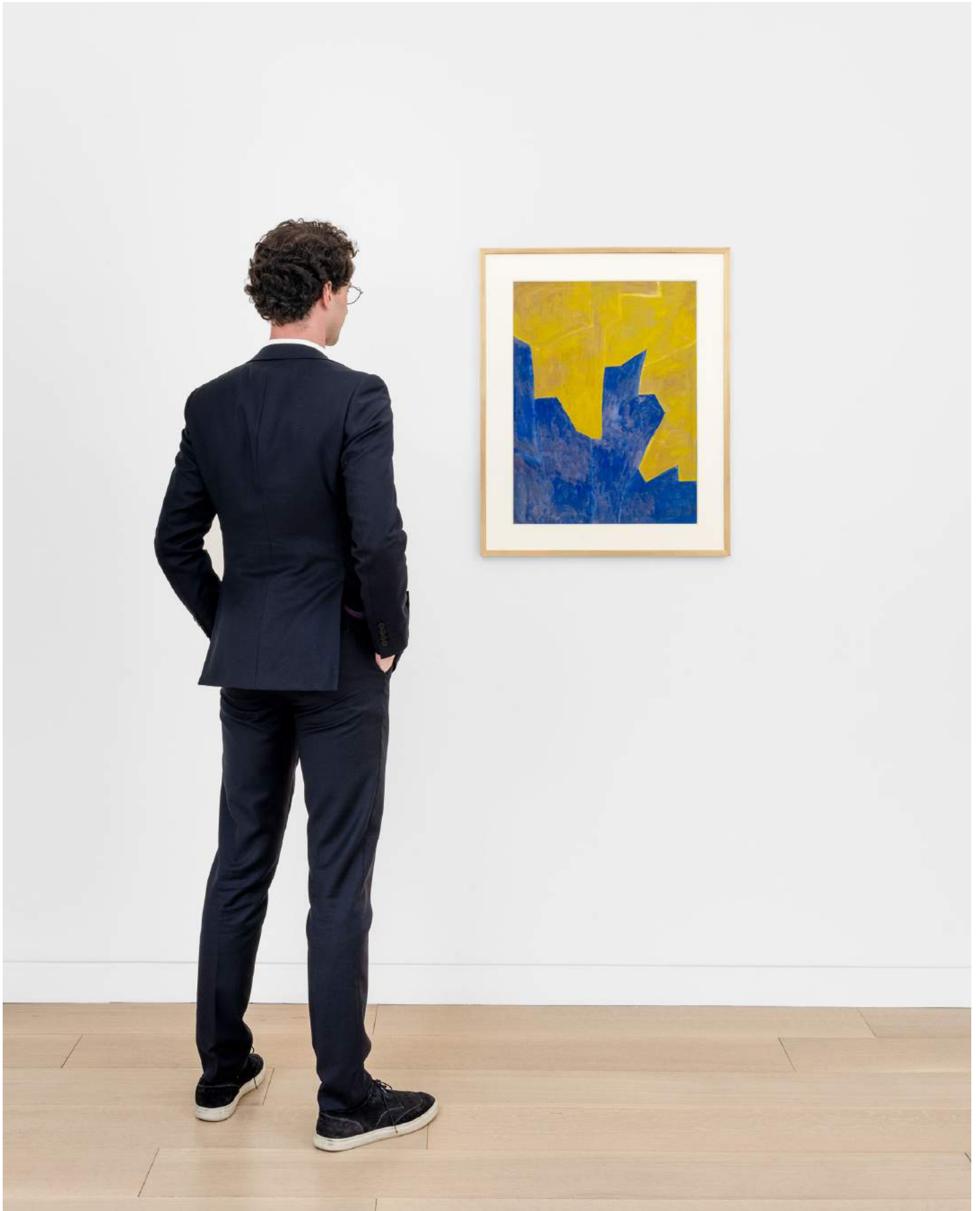
CHEIM & READ

23 EAST 67TH STREET NEW YORK NY 10065

TEL +1 212 242 7727

GALLERY@CHEIMREAD.COM







Serge Poliakoff
JAUNE ET VERT 1961
Gouache on paper
18 1/2 x 24 inches
47 x 61 centimeters
(ARCHIVES: 8610696)
CR# SP.35995

CHEIM & READ

23 EAST 67TH STREET NEW YORK NY 10065

TEL +1 212 242 7727

GALLERY@CHEIMREAD.COM









Serge Poliakoff
COMPOSITION ABSTRAITE 1964
Gouache on paper
10 x 12 1/2 inches
25.4 x 31.8 centimeters
(864022)
CR# SP.40236

CHEIM & READ

23 EAST 67TH STREET NEW YORK NY 10065

TEL +1 212 242 7727

GALLERY@CHEIMREAD.COM



Serge Poliakoff
COMPOSITION ABSTRAITE 1967
Gouache on paper
9 1/2 x 12 1/2 inches
24.1 x 31.8 centimeters
(866040)
CR# SP.40248

CHEIM & READ

23 EAST 67TH STREET NEW YORK NY 10065

TEL +1 212 242 7727

GALLERY@CHEIMREAD.COM



Serge Poliakoff
COMPOSITION ABSTRAITE 1967
Gouache on paper
12 1/2 x 9 1/2 inches
31.8 x 24.1 centimeters
(866044)
CR# SP.40249

CHEIM & READ

23 EAST 67TH STREET NEW YORK NY 10065

TEL +1 212 242 7727

GALLERY@CHEIMREAD.COM



Serge Poliakoff
COMPOSITION ABSTRAITE 1968
Gouache on paper
24 3/4 x 18 3/4 inches
63 x 47.5 centimeters
(ARCHIVES: 868039)
CR# SP.19302

CHEIM & READ
23 EAST 67TH STREET NEW YORK NY 10065
TEL +1 212 242 7727
GALLERY@CHEIMREAD.COM



Serge Poliakoff
COMPOSITION ABSTRAITE 1968
Gouache on paper
11 1/2 x 8 inches
29.2 x 20.3 centimeters
(868033)
CR# SP.40247

CHEIM & READ

23 EAST 67TH STREET NEW YORK NY 10065

TEL +1 212 242 7727

GALLERY@CHEIMREAD.COM



Serge Poliakoff
COMPOSITION ABSTRAITE 1969
Gouache on paper
24 x 18 1/2 inches
61 x 47 centimeters
(ARCHIVE #869061)
CR# SP.19308

CHEIM & READ

23 EAST 67TH STREET NEW YORK NY 10065

TEL +1 212 242 7727

GALLERY@CHEIMREAD.COM













Serge Poliakoff
Gouaches 1938-1969

















